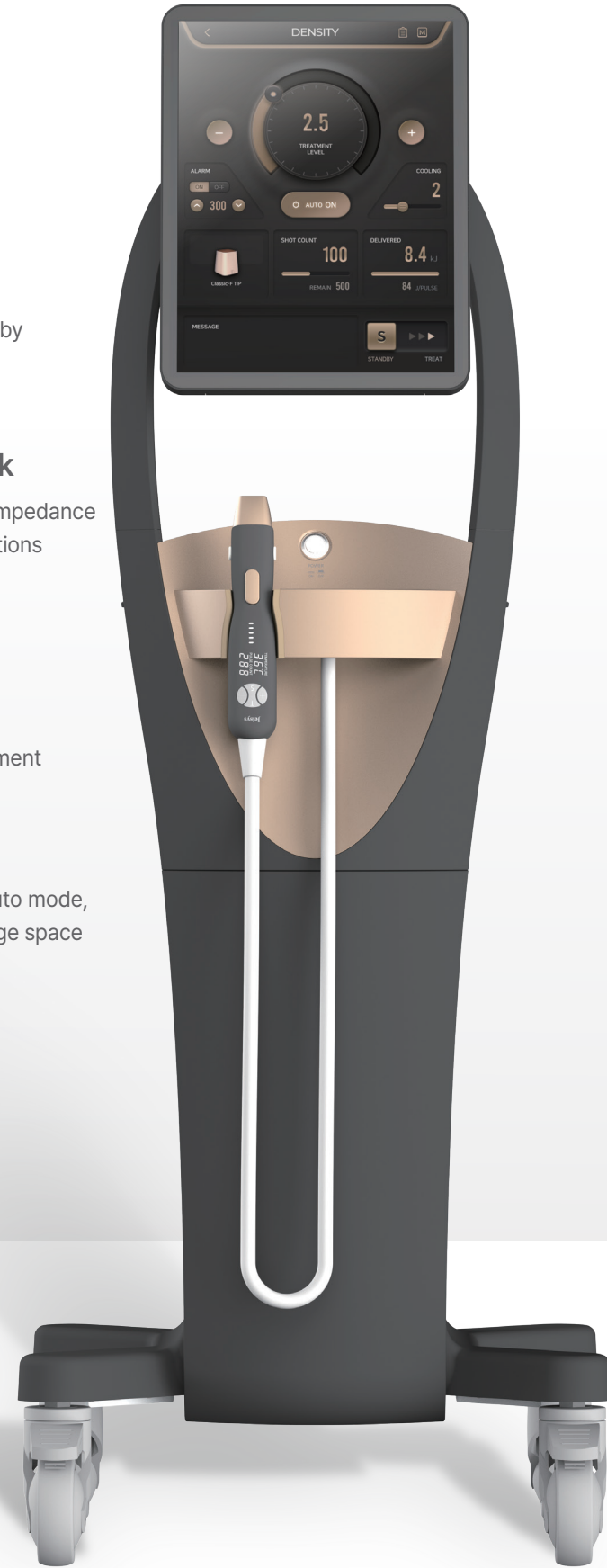


DENSITY

Powered by MONO+BI RF Sequential Heating technology with up to 400 W output, real-time impedance feedback, and a 5-level customizable cooling system, the device ensures stable and precise energy delivery for tailored treatments.

- 1 **Monopolar X Bipolar**
Single-shot MONO+BI RF delivery enabled by Patented Sequential Heating Technology
- 2 **Real-time Impedance Feedback**
Precise energy delivery through real-time impedance measurement tailored to patient skin conditions
- 3 **5-Level Smooth and Adjustable Cooling System**
Customized cooling pulses by tip type and 5-level adjustable cooling for tailored treatment
- 4 **Enhanced usability**
Enhanced practitioner convenience with Auto mode, a dedicated cable hanger, and ample storage space



DENSITY

A single device integrates both MONO and BI RF, enabling precise mode and output adjustments tailored to skin conditions and treatment plans.

Specifications

Model	DENSITY Noir
Output Frequency	6.78MHz
RF Type	Mono-polar / Bi-polar
Max Power	Max 400W
Number of Pulse	5 Pulses
Tips	High-F Tip, High-E Tip, High-B Tip Classic-F Tip, Classic-E Tip, Classic-B Tip
Dimensions	W 521 x L 624 x H 1373 mm
Weight	52kg
Rating	100 ~ 240 V (50-60Hz), 1000VA



Scan or visit to learn more

Jeisys

Jeisys Medical Inc. 307, 308, 401, 410 Daeryung Techno Town 8th, Gamasanh-ro 96, Geumcheon-gu, Seoul, Korea, 08501
Website : www.jeisyss.com Tel : +82 2 2603 6417 Fax : +82 2 2603 6447 Email : sales@jeisyss.com [R02B-C-AU00]

DENSITY



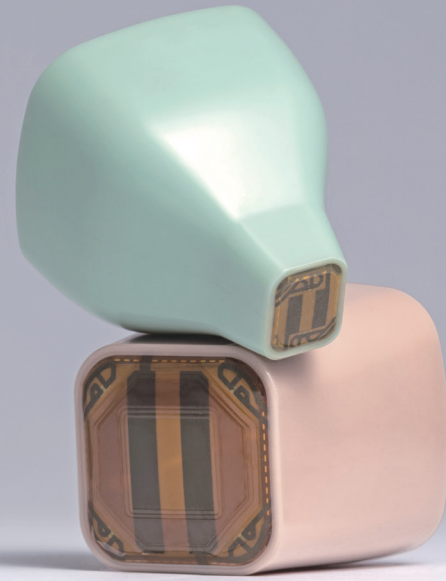
DENSITY

- Mono-Bi Sequential Heating Technology
- Auto impedance feedback system
- 5 level cooling adjustment



Monopolar X Bipolar

Single-shot MONO+BI RF delivery enabled by Patented Sequential Heating Technology



A wide selection of treatment tips is available to suit various treatment areas and purposes.

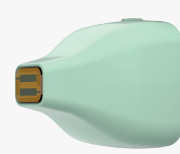
HIGH TIP (MONO X BI)

HIGH-F TIP



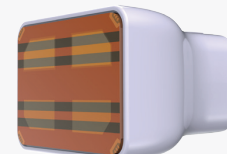
Full-area coverage
2*2cm (4cm²)

HIGH-E TIP



Small-area coverage
0.5*0.5cm (0.25cm²)

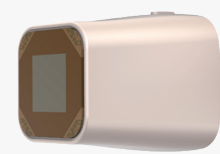
HIGH-B TIP



Wide-area coverage
5*3.2cm (16cm²)

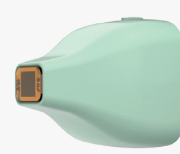
CLASSIC TIP (MONO Only)

CLASSIC-F TIP



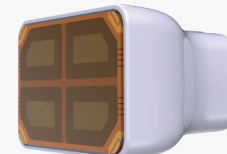
Full-area coverage
2*2cm (4cm²)

CLASSIC-E TIP



Small-area coverage
0.5*0.5cm (0.25cm²)

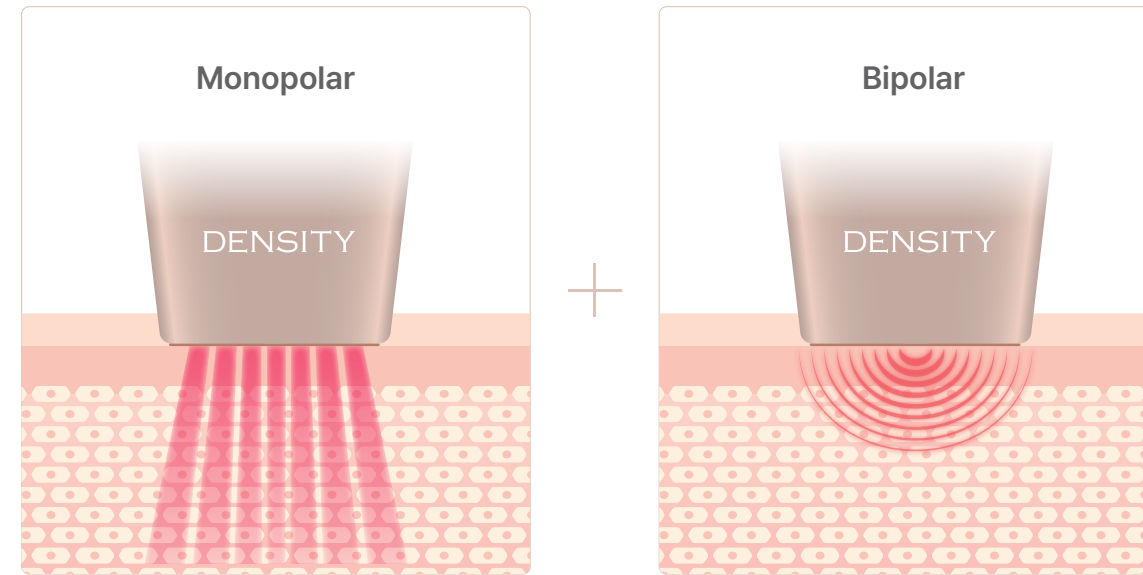
CLASSIC-B TIP



Wide-area coverage
5*3.2cm (16cm²)

Sequential Heating Technology

Patented Sequential Heating Technology delivers MONO+BI RF energy up to 400W to both deep and superficial layers.

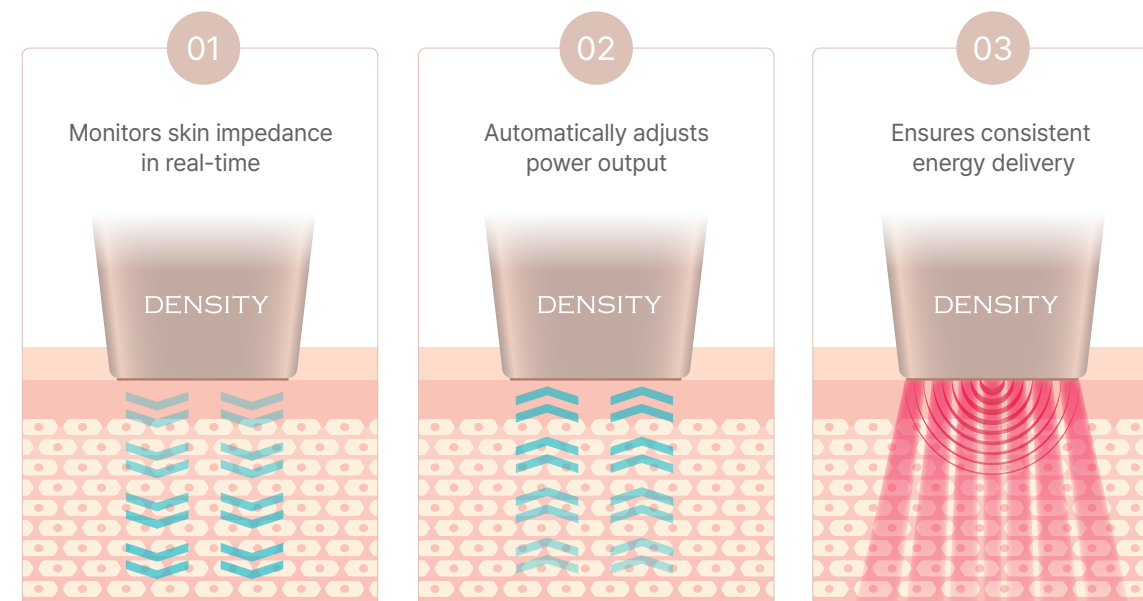


Stable energy delivery to the deep dermis

Dense energy delivery to the superficial dermis

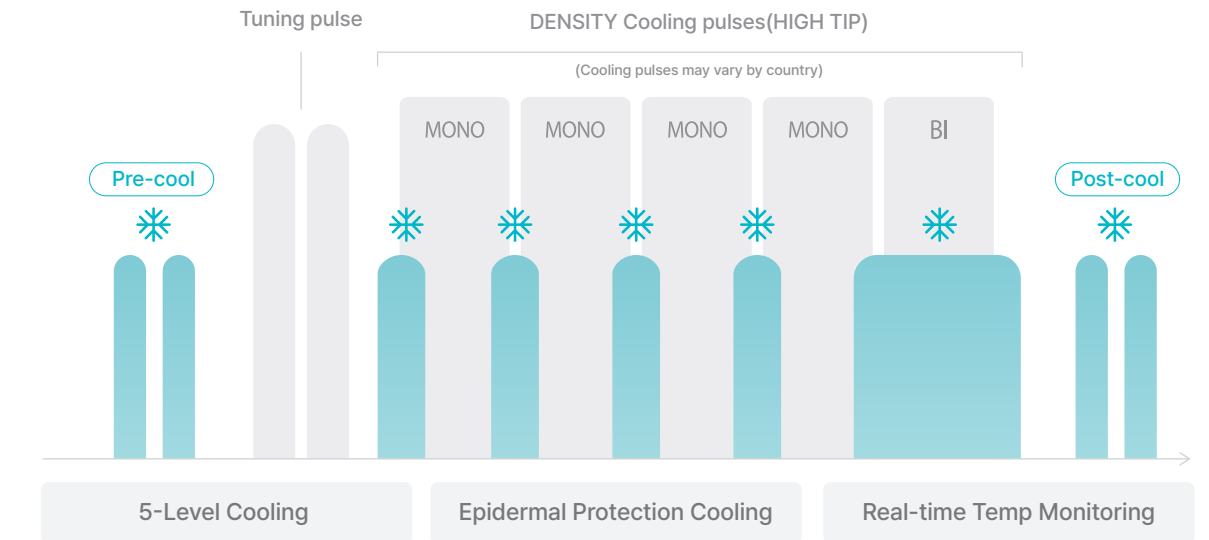
Impedance Calibration

continuously detects changes in skin impedance and instantly adjusts the output, ensuring consistent and precise energy delivery throughout the procedure



Smooth Adjustable Cooling

The independently adjustable 5-level cooling system protects the skin from thermal damage, enabling delicate treatments tailored to each skin type.



Handpiece, Designed for Comfort

The LCD display allows real-time monitoring of skin temperature, shot count, and energy output, while enabling easy adjustment of energy levels and modes.

